

# INSTRUMENTATION RANGE



Premier Pro



White Premier Pro



Driftwood



Lido



Sahara

|                                                     |           |              |              |             |              |
|-----------------------------------------------------|-----------|--------------|--------------|-------------|--------------|
| Fuel Gauge                                          | 2" 62718P | 2" 62551P    | 2" 61549P    | 2" 65496P   | 2" 59707P    |
| Hourmeter 10,000hrs                                 | 2" 62719P | 2" 62538P    | 2" 62952P    | 2" 65497P   |              |
| Oil Pressure Gauge (SW) 0-80 PSI                    | 2" 62720P | 2" 62542P    | 2" 61550P    | 2" 65501P   | 2" 59705P    |
| Oil Pressure Gauge (SW) 0-100 PSI                   |           | 2" 62543P    |              | 2" 65498P   |              |
| Water Pressure Kit (Outboard) 30 PSI                | 2" 62721P | 2" 62848P    | 2" 62960P    | 2" 65507P   | 2" 61870P    |
| Water Pressure Kit (Outboard) 40 PSI                |           |              |              |             |              |
| Water Pressure Kit (Outboard) 45 PSI                |           |              |              |             |              |
| Water Pressure Kit (Outboard) 60 PSI                |           |              |              |             |              |
| Speedo Kit 35 MPH (Pitot Type)                      |           |              | 3" 62775P    | 3" 61751P   | 3" 61826P    |
| Speedo Kit 50 MPH (Pitot Type)                      |           |              | 3" 61547P    | 3" 61752P   | 3" 61163P    |
| Speedo Kit 60 MPH (Pitot Type)                      |           |              |              |             |              |
| Speedo Kit 65 MPH (Pitot Type)                      | 3" 62722P | 3" 62546P    | 3" 62372P    | 3" 65510P   | 3" 59704P    |
| Speedo Kit 70 MPH (Pitot Type)                      |           |              |              |             |              |
| Speedo Kit 80 MPH (Pitot Type)                      | 3" 62723P | 3" 65626SSFP | 3" 63516P    | 3" 65670P   | 3" 63076P    |
| Tachometer, 0-6000 RPM O/B & 4 Cycle Gas            | 3" 62724P |              |              |             |              |
| Tachometer, 0-7000 RPM O/B & 4 Cycle Gas            |           | 3" 62561P    | 3" 61546P    | 3" 65693P   | 3" 59703P    |
| Tachometer, 0-8000 RPM O/B & 4 Cycle Gas            | 3" 62725P |              |              |             |              |
| Tachometer 0-4000 RPM Diesel Alt                    |           | 3" 62547P    |              | 3" 65671P   |              |
| Tach/Hour 0-7000 RPM O/B & 4 Cycle Gas              |           | 3" 62565P    | 3" 63941P    | 3" 65129P   |              |
| Tachometer - System check gauge                     |           |              | 3" 62698P    | 3" 64477FP  | 3" 61901P    |
| Water Temp (SW) 120-240°F                           | 2" 62729P | 2" 62540P    | 2" 61552P    | 2" 65509P   | 2" 59706P    |
| Water Temperature Kit (outboards)                   | 2" 62748P |              |              | 2" 65508P   |              |
| Trim Gauge Evinrude/Johnson                         | 2" 62726P | 2" 62550P    | 2" 62373P    | 2" 65502P   | 2" 61908P    |
| Trim Gauge Honda                                    | 2" 63531P |              | 2" 62375P    | 2" 65503P   | 2" 62369P    |
| Trim Gauge all Mariner/Merc., 2001 and newer Yamaha | 2" 62727P | 2" 62549P    | 2" 61551P    | 2" 65504P   | 2" 59709P    |
| Trim Gauge 2002 and newer Suzuki 4-Stroke           | 2" 62726P | 2" 62550P    | 2" 62373P    | 2" 65502P   | 2" 61908P    |
| Trim Gauge pre 2001 Yamaha outboards                | 2" 62728P |              |              | 2" 65505P   |              |
| Voltmeter 12v                                       | 2" 62730P | 2" 62555P    | 2" 61548     | 2" 65506P   | 2" 59708P    |
| Voltmeter 24v                                       |           | 2" 62539P    |              |             |              |
| 12V Battery Condition Indicator                     |           |              |              |             |              |
| Engine Synchronizer Gauge                           | 2" 84730P |              |              | 2" 65495P   |              |
| System check gauge - Evinrude/Johnson               |           |              |              | 2" 65206SSP | 2" 66956P    |
| System check gauge - Suzuki                         |           |              | 2" 65697BMDP | 2" 65669SSP | 2" 65695BMDP |
| Ammeter                                             |           |              |              |             |              |
| 4 Gauge Kits (Outboard)                             | 62714P*   |              |              |             | 65481P*      |
| 6 Gauge Kits (Sterndrive)                           | 62715P*   |              |              |             | 65485P*      |



\* **Outboard kit** - Tachometer, Speedometer (with pitot tube), Fuel Gauge (compatible with common marine senders), and Voltmeter. Matching Trim Gauges, Hourmeters and Water Pressure or Temperature Kits are available separately. (Not for diesels.)

\* **Sterndrive kit** - Tachometer, Speedometer (with pitot tube), Fuel Gauge, Water Temperature Gauge, Oil Pressure Gauge (all compatible with common marine senders), and Voltmeter. Matching Trim Gauges and Hourmeters are available separately for stern drive applications. (Not for diesels.)

\* (100-220F) range.

## ORDERING INFORMATION



Sterling



Gold Sterling



Black Sterling



Amega



Arctic



Eclipse



Heavy Duty

|             |           |           |            |           |           |           |
|-------------|-----------|-----------|------------|-----------|-----------|-----------|
| 2" 63477P   | 2" 67101P | 2" 67021P | 2" 57902P  | 2" 68365P | 2" 68390P | 2" 80150P |
|             |           |           | 2" 84760P  | 2" 68366P | 2" 68391P | 2" 82760P |
| 2" 63479P   | 2" 67104P | 2" 67022P | 2" 57903P  | 2" 68367P | 2" 68392P | 2" 80180P |
|             |           |           | 2" 57929P  | 2" 68368P | 2" 68393P | 2" 80181P |
| 2" 63481P   |           |           | 2" 61238P  |           |           |           |
|             | 2" 67873P |           | 2" 68357P  | 2" 68369P | 2" 68394P |           |
|             |           |           | 2" 61012P  |           |           |           |
|             |           |           | 2" 58710P  |           |           |           |
|             | 3" 67173P | 3" 67283P | 3" 58342P  | 3" 68370P | 3" 68395P |           |
|             |           |           | 3" 57898P  |           |           |           |
|             | 3" 67106P |           |            |           |           | 3" 80514P |
| 3" 63475P   |           |           | 3" 57900P  | 3" 68371P | 3" 68396P |           |
|             |           | 3" 67285P |            |           |           |           |
| 3" 63476P   |           |           | 3" 57899P  | 3" 68372P | 3" 68397P |           |
|             | 3" 67107P |           |            |           |           | 3" 82288P |
| 3" 63473P   |           | 3" 67363P | 3" 58255P  | 3" 68374P | 3" 68399P |           |
|             |           |           |            |           |           |           |
|             |           |           | 3" 68358P  | 3" 68373P | 3" 68398P | 3" 82302P |
| 3" 63474P   | 3" 67174P | 3" 67364P | 3" 68433P  | 3" 68375P | 3" 68400P |           |
|             |           |           | 3" 58935P  |           |           |           |
| 2" 63480P   | 2" 67105P | 2" 67020P | 2" 57904P  | 2" 68376P | 2" 68401P | 2" 80590P |
|             |           |           | 2" 58862P* | 2" 68377P | 2" 68402P |           |
| 2" 63483P   | 2" 67175P | 2" 67365P | 2" 58431P  | 2" 68378P | 2" 68403P |           |
| 2" 64475P   | 2" 67176P |           | 2" 68359P  | 2" 68379P | 2" 68404P |           |
|             |           |           |            |           |           |           |
| 2" 63482P   | 2" 67103P | 2" 67023P | 2" 57905P  | 2" 68380P | 2" 68405P |           |
| 2" 63483P   |           |           | 2" 58431P  |           |           |           |
|             |           |           | 2" 61748P  | 2" 68381P | 2" 68406P |           |
| 2" 63478P   | 2" 67102P | 2" 67019P | 2" 57901P  | 2" 68383P | 2" 68408P | 2" 80134P |
|             |           |           |            |           |           | 2" 80131P |
|             |           |           | 2" 68361P  | 2" 68384P | 2" 68409P |           |
|             |           |           |            |           |           | 2" 80730P |
| 2" 65698SSP |           |           | 2" 65205P  | 2" 68385P | 2" 68410P |           |
|             |           |           |            | 2" 68386P | 2" 68411P |           |
|             |           |           | 2" 68356P  | 2" 68364P | 2" 68389P | 2" 80710P |
|             |           |           | 68362P*    | 68387P*   | 68412P*   |           |
|             |           |           | 68363P*    | 68388P*   | 68413P*   |           |

Teleflex supplies many additional gauge types and gauge lines that may not be listed here.  
For a complete listing for gauges available go to [www.teleflexmarine.com](http://www.teleflexmarine.com), 'Find a Gauge' area.

# PREMIER PRO

A very popular OEM line, Premier features black dials with modern white and blue graphics. When lighted, white dial grads become red and pointer lights white. These instruments feature automotive type light-piping and a fog-resistant design for outstanding readability.



62718P



62722P

## FEATURES:

- Full automotive type lighting, no “halo” around dial edges. When lit, white dial grads become red, pointer lights white.
- Black dial, white graduations/numerals (metrics in blue), white pointer staff.
- Scratch resistant curved glass lenses, with black, near-flush bezels.
- U.S. and metric scales, with ISO symbols, where appropriate.
- Optional add-on square bezels for modular appearance (See Gauge Accessories for details).
- Line includes standard ignition engine synchronizer kits including module.
- Fog-Resistant Design! Complies with SAE J-1810.

## SELECTION GUIDE:

| GAUGE DESCRIPTION                                                                         | SIZE | DIAL RANGE  | SENDER CODE   | PART NUMBER |
|-------------------------------------------------------------------------------------------|------|-------------|---------------|-------------|
| Engine Synchronizer Gauge:                                                                | 2"   | PORT-STBD.  | REQUIRES "L"  | 84730P      |
| Fuel Gauge:                                                                               | 2"   | E-1/2-F     | REQUIRES "F"  | 62718P      |
| Hourmeter:                                                                                | 2"   | 10,000 Hrs. | NONE REQUIRED | 62719P      |
| Oil Pressure Gauge (Electric):                                                            |      |             |               |             |
| Oil Pressure 80 PSI                                                                       | 2"   | 0-80 PSI    | REQUIRES "C"  | 62720P      |
| Speedometer Kits:                                                                         |      |             |               |             |
| 65 MPH (Pitot type)                                                                       | 3"   | 10-65 MPH   | INCLUDES "G"  | 62722P      |
| 65 MPH (Pitot type) Head Only                                                             | 3"   | 10-65 MPH   | INCLUDES "G"  | 62722PH     |
| 80 MPH (Pitot type)                                                                       | 3"   | 20-80 MPH   | INCLUDES "G"  | 62723P      |
| 80 MPH (Pitot type) Head Only                                                             | 3"   | 20-80 MPH   | INCLUDES "G"  | 62723PH     |
| Tachometers (Electric):                                                                   |      |             |               |             |
| O/B & 4-Stroke Gas Engines*                                                               | 3"   | 0-6000 RPM  | O/B ALT./COIL | 62724P      |
| O/B & 4-Stroke Gas Engines*                                                               | 3"   | 0-8000 RPM  | O/B ALT./COIL | 62725P      |
| Trim Gauges (Outboard, I/O):                                                              |      |             |               |             |
| Evinrude/Johnson Outboards                                                                | 2"   | UP-DOWN     | BY ENG. MFR   | 62726P      |
| Honda Outboards                                                                           | 2"   | UP-DOWN     | BY ENG. MFR   | 63531P      |
| Mariner/Merc/Cobra/Volvo DP, SX,<br>Yamaha 2001 and on                                    | 2"   | UP-DOWN     | BY ENG. MFR   | 62727P      |
| Suzuki 4-Stroke, 2002 to date                                                             | 2"   | UP-DOWN     | BY ENG. MFR   | 62726P      |
| Yamaha Outboards, pre 2001                                                                | 2"   | UP-DOWN     | BY ENG. MFR   | 62728P      |
| Voltmeter-12 Volt:                                                                        | 2"   | 8-18 VDC    | NONE REQUIRED | 62730P      |
| Water Pressure Kit (Outboard):**<br>(Each kit includes fittings and<br>20 feet of tubing) | 2"   | 30 PSI      | INCLUDES "WP" | 62721P      |
| Water Temp. Kit (Outboard):**<br>(For all electric-start outboards)                       | 2"   | COLD-HOT    | INCLUDES "J"  | 62748P      |
| Water Temp. Gauge (I/O, I/B):                                                             | 2"   | 120-240°F   | REQUIRES "D"  | 62729P      |
| 4 Gauge Set, Fog Free                                                                     |      |             |               | 62714P      |
| 6 Gauge Set, Fog Free                                                                     |      |             |               | 62715P      |

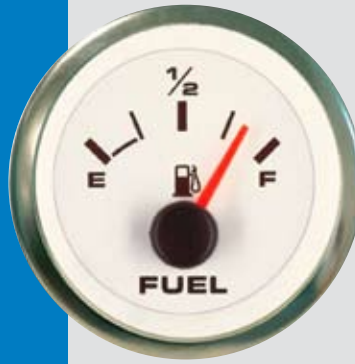
\*Mariner 30 & 40 HP (2-cylinder) engines require a module (Mercury P/N 17461A2) when using any of these tachometers. Not tested for non-original-equipment (aftermarket) ignition systems. Not for diesels.

\*\* Adapter (P/N 61886P) is required for Yamaha.

*All gauge products are only available in North America!*

# WHITE PREMIER PRO

Ideal for inboards, including diesels, Premier White features polished stainless steel bezels and clean white dials with modern black and blue graphics. When illuminated, black dial grads become red and pointer lights red. Automotive type light-piping and fog-resistant design combine for outstanding readability.



62551P



62561P

## FEATURES:

- Full automotive type lighting, no “halo” around dial edges. When illuminated, white dial grads become red, pointer lights white.
- White dial, black graduations/numerals (metrics in blue), red pointer staff.
- Scratch resistant curved glass lenses, with polished stainless steel near-flush bezels.
- U.S. and metric scales, with ISO symbols, where appropriate.
- Optional add-on square bezels for modular appearance (See Gauge Accessories for details).
- Complies with SAE J-1810.
- Fog-Resistant\* Design!

## SELECTION GUIDE:

| GAUGE DESCRIPTION                                      | SIZE | DIAL RANGE  | SENDER CODE   | PART NUMBER |
|--------------------------------------------------------|------|-------------|---------------|-------------|
| Fuel Gauge:                                            | 2"   | E-1/2-F     | REQUIRES "F"  | 62551P      |
| Hourmeter:                                             | 2"   | 10,000 Hrs. | NONE REQUIRED | 62538P      |
| Oil Pressure Gauges (Electric):                        |      |             |               |             |
| Oil Pressure 80 PSI                                    | 2"   | 0-80 PSI    | REQUIRES "C"  | 62542P      |
| Oil Pressure 100 PSI                                   | 2"   | 0-100 PSI   | REQUIRES "C"  | 62543P      |
| Speedometer Kits:                                      |      |             |               |             |
| 65 MPH (Pitot type)                                    | 3"   | 10-65 MPH   | INCLUDES "G"  | 62546P      |
| 65 MPH (Pitot type) Head Only                          | 3"   | 10-65 MPH   | INCLUDES "G"  | 62546PH     |
| 80 MPH (Pitot type)                                    | 3"   | 20-80 MPH   | INCLUDES "G"  | 65626SSFP   |
| 80 MPH (Pitot type)                                    | 3"   | 20-80 MPH   | INCLUDES "G"  | 65626SSFPH  |
| Tachometer (Electric):                                 |      |             |               |             |
| O/B & 4-Stroke Gas Engines*                            | 3"   | 0-7000 RPM  | O/B ALT./COIL | 62561P      |
| Tachometer/Hourmeter (Electric):                       |      |             |               |             |
| O/B & 4-Stroke Gas Engines*                            | 3"   | 0-7000 RPM  | O/B ALT./COIL | 62565P      |
| Tachometers (Electric):                                |      |             |               |             |
| Diesel Alternator**                                    | 3"   | 0-4000 RPM  | SEE "T"       | 62547P      |
| Diesel Magnetic Pickup, 90-180 Teeth                   | 3"   | 0-4000 RPM  | REQUIRES "B"  | 62548P      |
| Trim Gauges (Outboard, I/O):                           |      |             |               |             |
| Evinrude/Johnson Outboards                             | 2"   | UP-DOWN     | BY ENG. MFR   | 62550P      |
| Mariner/Merc/Cobra/Volvo DP, SX,<br>Yamaha 2001 and on | 2"   | UP-DOWN     | BY ENG. MFR   | 62549P      |
| Suzuki 4-Stroke, 2002 to date                          | 2"   | UP-DOWN     | BY ENG. MFR   | 62550P      |
| Voltmeters-12 & 24 Volt:                               |      |             |               |             |
| 12 Volt System                                         | 2"   | 8-18 VDC    | NONE REQ'D    | 62555P      |
| 24 Volt System                                         | 2"   | 20-32 VDC   | NONE REQ'D    | 62539P      |
| Water Temp. Gauge (I/O, I/B):                          | 2"   | 120-240°F   | REQUIRES "D"  | 62540P      |
| Water Pressure Kit, O/B                                | 2"   | 40 PSI      |               | 67657P      |

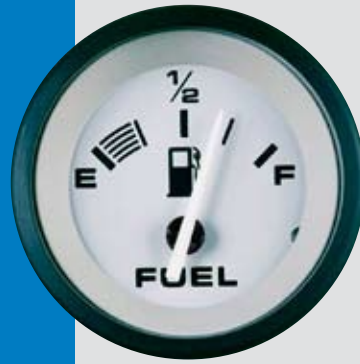
\* Mariner 30 & 40 HP (2-cylinder) engines require a module (Mercury P/N 17461A2) when using any of these tachometers. Not tested for non-original-equipment (aftermarket) ignition systems. Not for diesels.

\*\* May require alternator tap.

*All gauge products are only available in North America!*

# DRIFTWOOD

Driftwood features light gray dials, clean black numerals and a black pointer hub with white staff. These instruments lend a sophisticated look to any dash. Combination blue through-dial and white perimeter lighting are included for excellent readability at night.



61549P



61547P

## FEATURES:

- Light gray dial, black graduations/numerals, white pointer staff.
- Scratch resistant curved glass lenses, with black, near-flush bezels.
- White perimeter and blue thru-dial lighting.
- U.S. and metric scales, with ISO symbols, where appropriate.
- Optional add-on square bezels for modular appearance (See Gauge Accessories for details).

## SELECTION GUIDE:

| GAUGE DESCRIPTION                                                             | SIZE | DIAL RANGE  | SENDER CODE   | PART NUMBER |
|-------------------------------------------------------------------------------|------|-------------|---------------|-------------|
| Fuel Gauge:                                                                   | 2"   | E-1/2-F     | REQUIRES "F"  | 61549P      |
| Hourmeter:                                                                    | 2"   | 10,000 Hrs. | NONE REQ'D    | 62952P      |
| Oil Pressure Gauge (Electric):                                                | 2"   | 0-80 PSI    | REQUIRES "C"  | 61550P      |
| Speedometer Kits:                                                             |      |             |               |             |
| Low Speed Range (Pitot type)                                                  | 3"   | 5-35 MPH    | INCLUDES "G"  | 62775P      |
| 50 MPH (Pitot type)                                                           | 3"   | 10-50 MPH   | INCLUDES "G"  | 61547P      |
| 50 MPH (Pitot type) Head Only                                                 | 3"   | 10-50 MPH   | INCLUDES "G"  | 61547PH     |
| 65 MPH (Pitot type)                                                           | 3"   | 10-65 MPH   | INCLUDES "G"  | 62372P      |
| 65 MPH (Pitot type) Head Only                                                 | 3"   | 10-65 MPH   | INCLUDES "G"  | 62372PH     |
| 80 MPH (Pitot type)                                                           | 3"   | 20-80 MPH   | INCLUDES "G"  | 63516P      |
| 80 MPH (Pitot type) Head Only                                                 | 3"   | 20-80 MPH   | INCLUDES "G"  | 63516PH     |
| Tachometer (Electric):                                                        |      |             |               |             |
| O/B & 4-Stroke Gas Engines*                                                   | 3"   | 0-7000 RPM  | O/B ALT./COIL | 61546P      |
| Systems Check – Evinrude/Johnson                                              | 3"   | 0-7000 RPM  | O/B ALT./COIL | 62698P      |
| Tachometer/Hourmeter (Electric):                                              |      |             |               |             |
| O/B & 4-Stroke Gas Engines*                                                   | 3"   | 0-7000 RPM  | O/B ALT./COIL | 63941P      |
| Trim Gauges (Outboard, I/O):                                                  |      |             |               |             |
| Evinrude/Johnson Outboard                                                     | 2"   | UP-DOWN     | BY ENG. MFR.  | 62373P      |
| Honda                                                                         | 2"   | UP-DOWN     | BY ENG. MFR.  | 62375P      |
| Mariner/Merc/Cobra/Volvo DP, SX,<br>Yamaha 2001 and on                        | 2"   | UP-DOWN     | BY ENG. MFR.  | 61551P      |
| Suzuki 4-Stroke, 2002 to date                                                 | 2"   | UP-DOWN     | BY ENG. MFR.  | 62373P      |
| Voltmeter-12 Volt:                                                            | 2"   | 8-18 VDC    | NONE REQ'D    | 61548P      |
| Warning Light Gauge – Suzuki:                                                 | 2"   | SYSTEM DATA | BY ENG. MFR.  | 65697BMDP   |
| Water Pressure Kit (Outboard):**<br>(Kit includes fittings/20 feet of tubing) | 2"   | 30 PSI      | INCLUDES "WP" | 62960P      |
| Water Temp. Gauge (I/O, I/B):                                                 | 2"   | 120-240°F   | REQUIRES "D"  | 61552P      |

\* Mariner 30 & 40 HP (2-cylinder) engines require a module (Mercury P/N 17461A2) when using any of these tachometers. Not tested for non-original-equipment (aftermarket) ignition systems. Not for diesels.

\*\* Adapter (P/N 61886P) is required for Yamaha.

*All gauge products are only available in North America!*

# LIDO

Hottest selling white dial line! A comprehensive family of instruments for most engine types, Lido features crisp white dials and fire-orange pointer tips. Red through-dial and white perimeter lighting provide great night readability. Excellent inboard coverage with engine sync gauges\* and diesel alternator and magnetic pickup tachometers\*\*.

\*Module required, not included with gauge.

\*\*Magnetic Pickup sender available separately.



65496P



65129P

## FEATURES:

- White dial, black numerals, black pointer with fire-orange tip.
- Scratch resistant curved glass lenses, with polished stainless steel, near-flush bezels.
- U.S. and metric scales, with ISO symbols.
- Optional add-on square bezels for modular appearance (See Gauge Accessories for details).
- White perimeter and red thru-dial lighting.
- Comprehensive line includes tachometers for diesel alternator and magnetic pickup PLUS synchronizer gauge (Suitable for gas or diesel engines with appropriate module. Module required, not included with gauge).

## SELECTION GUIDE:

| GAUGE DESCRIPTION                                                    | SIZE | DIAL RANGE  | SENDER CODE   | PART NUMBER |
|----------------------------------------------------------------------|------|-------------|---------------|-------------|
| Engine Sync (gauge only)                                             | 2"   | PORT-STBD.  | REQUIRES "L"  | 65495P      |
| Fuel Gauge:                                                          | 2"   | E-1/2-F     | REQUIRES "F"  | 65496P      |
| Hourmeter:                                                           | 2"   | 10,000 Hrs. | NONE REQ'D    | 65497P      |
| Oil Pressure Gauges (Electric):                                      |      |             |               |             |
| Oil Pressure 80 PSI                                                  | 2"   | 0-80 PSI    | REQUIRES "C"  | 65501P      |
| Oil Pressure 100 PSI                                                 | 2"   | 0-100 PSI   | REQUIRES "C"  | 65498P      |
| Speedometer Kits:                                                    |      |             |               |             |
| Low Speed Range (Pitot type)                                         | 3"   | 5-35 MPH    | INCLUDES "G"  | 61751P      |
| Low Speed Range (Pitot type) Head Only                               | 3"   | 5-35 MPH    | INCLUDES "G"  | 61751PH     |
| 50 MPH (Pitot type)                                                  | 3"   | 10-50 MPH   | INCLUDES "G"  | 61752P      |
| 50 MPH (Pitot type) Head Only                                        | 3"   | 10-50 MPH   | INCLUDES "G"  | 61752PH     |
| 65 MPH (Pitot type)                                                  | 3"   | 10-65 MPH   | INCLUDES "G"  | 65510P      |
| 80 MPH (Pitot type)                                                  | 3"   | 20-80 MPH   | INCLUDES "G"  | 65670P      |
| 80 MPH (Pitot type) Head Only                                        | 3"   | 20-80 MPH   | INCLUDES "G"  | 65670PH     |
| Systems Check – Evinrude/Johnson:                                    | 2"   | SYSTEM DATA | BY ENG. MFR.  | 65206SSP    |
| Tachometer (Electric):                                               |      |             |               |             |
| O/B & 4-Stroke Gas Engines*                                          | 3"   | 0-7000 RPM  | O/B ALT./COIL | 65693P      |
| Systems Check – Evinrude/Johnson                                     | 3"   | 0-7000 RPM  | O/B ALT./COIL | 64477FP     |
| Tachometer/Hourmeters (Electric):                                    |      |             |               |             |
| O/B & 4-Stroke Gas Engines*                                          | 3"   | 0-7000 RPM  | O/B ALT./COIL | 65129P      |
| Diesel Alternator**                                                  | 3"   | 0-4000 RPM  | SEE "T"       | 65671P      |
| Diesel Magnetic Pickup, 90-180 Teeth                                 | 3"   | 0-4000 RPM  | REQUIRES "B"  | 65692P      |
| Trim Gauges (Outboard, I/O):                                         |      |             |               |             |
| Evinrude/Johnson Outboard                                            | 2"   | UP-DOWN     | BY ENG. MFR.  | 65502P      |
| Honda Outboards                                                      | 2"   | UP-DOWN     | BY ENG. MFR.  | 65503P      |
| Mariner/Merc/Cobra/Volvo DP, SX,<br>Yamaha 2001, and on              | 2"   | UP-DOWN     | BY ENG. MFR.  | 65504P      |
| Suzuki 4-Stroke, 2002 to date                                        | 2"   | UP-DOWN     | BY ENG. MFR.  | 65502P      |
| Yamaha Outboards, pre 2001                                           | 2"   | UP-DOWN     | BY ENG. MFR.  | 65505P      |
| Voltmeter-12 Volt:                                                   | 2"   | 8-18 VDC    | NONE REQ'D    | 65506P      |
| Warning Light Gauge – Suzuki:                                        | 2"   | SYSTEM DATA | BY ENG. MFR.  | 65669SSP    |
| Water Pressure Kit (Outboard):***                                    |      |             |               |             |
| Each kit includes fittings<br>and 20 feet of tubing)                 | 2"   | 30 PSI      | INCLUDES "WP" | 65507P      |
| Water Temp. Kit (Outboard):***<br>(For all electric-start outboards) | 2"   | COLD-HOT    | INCLUDES "J"  | 65508P      |
| Water Temp. Gauge (I/O, I/B):                                        | 2"   | 120-240°F   | REQUIRES "D"  | 65509P      |

\* Mariner 30 & 40 HP (2-cylinder) engines require a module (Mercury P/N 17461A2) when using any of these tachometers. Not tested for non-original-equipment (aftermarket) ignition systems. Not for diesels.

\*\* May require alternator tap. \*\*\* Adapter (P/N 61886P) is required for Yamaha.

*All gauge products are only available in North America!*

# SAHARA

With crisp tan dials and fire-orange pointer tip, Sahara gives any dash the elegant OEM look. Combined red through-dial and white perimeter lighting provide great night readability. These aren't merely "close enough" — they're the real thing!



61908P



69704P

## FEATURES:

- Tan dial and retainer, black graduations and numerals, black pointer with fire-orange tip.
- Scratch resistant curved glass lenses, with black matte, near-flush bezels.
- White perimeter and red thru-dial lighting.
- U.S. and metric scales, with ISO symbols, where appropriate.
- Optional add-on square bezels for modular appearance (See Gauge Accessories for details).

## SELECTION GUIDE:

| GAUGE DESCRIPTION                                      | SIZE | DIAL RANGE  | SENDER CODE   | PART NUMBER |
|--------------------------------------------------------|------|-------------|---------------|-------------|
| Clock-Quartz:                                          | 2"   | 12 Hour     | NONE REQ'D    | 61166P      |
| Fuel Gauge:                                            | 2"   | E-1/2-F     | REQUIRES "F"  | 59707P      |
| Oil Pressure Gauge (Electric):                         | 2"   | 0-80 PSI    | REQUIRES "C"  | 59705P      |
| Speedometer Kits:                                      |      |             |               |             |
| Low Speed Range (Pitot type)                           | 3"   | 5-35 MPH    | INCLUDES "G"  | 61826P      |
| Low Speed Range (Pitot type) Head Only                 | 3"   | 5-35 MPH    | INCLUDES "G"  | 61826PH     |
| 50 MPH (Pitot type)                                    | 3"   | 10-50 MPH   | INCLUDES "G"  | 61163P      |
| 50 MPH (Pitot type) Head Only                          | 3"   | 10-50 MPH   | INCLUDES "G"  | 61163PH     |
| 65 MPH (Pitot type)                                    | 3"   | 10-65 MPH   | INCLUDES "G"  | 59704P      |
| 65 MPH (Pitot type) Head Only                          | 3"   | 10-65 MPH   | INCLUDES "G"  | 59704PH     |
| 80 MPH (Pitot type)                                    | 3"   | 20-80 MPH   | INCLUDES "G"  | 63076P      |
| 80 MPH (Pitot type) Head Only                          | 3"   | 20-80 MPH   | INCLUDES "G"  | 63076PH     |
| Systems Check – Evinrude/Johnson:                      | 2"   | SYSTEM DATA | BY ENG. MFR.  | 66956P      |
| Tachometer (Electric):                                 |      |             |               |             |
| O/B & 4-Stroke Gas Engines*                            | 3"   | 0-7000 RPM  | O/B ALT./COIL | 59703P      |
| Systems Check – Evinrude/Johnson                       | 3"   | 0-7000 RPM  | O/B ALT./COIL | 61901P      |
| Trim Gauges (Outboard, I/O):                           |      |             |               |             |
| Evinrude/Johnson Outboard                              | 2"   | UP-DOWN     | BY ENG. MFR.  | 61908P      |
| Honda Outboards                                        | 2"   | UP-DOWN     | BY ENG. MFR.  | 62369P      |
| Mariner/Merc/Cobra/Volvo DP, SX,<br>Yamaha 2001 and on | 2"   | UP-DOWN     | BY ENG. MFR.  | 59709P      |
| Suzuki 4-Stroke, 2002 to date                          | 2"   | UP-DOWN     | BY ENG. MFR.  | 61908P      |
| Voltmeter-12 Volt:                                     | 2"   | 8-18 VDC    | NONE REQ'D    | 59708P      |
| Warning Light Gauge – Suzuki:                          | 2"   | SYSTEM DATA | BY ENG. MFR.  | 65695BMDP   |
| Water Pressure Kits (Outboard):**                      |      |             |               |             |
| (Each kit includes fittings<br>and 20 feet of tubing)  | 2"   | 15 PSI      | INCLUDES "WP" | 61902P      |
|                                                        | 2"   | 30 PSI      | INCLUDES "WP" | 61870P      |
| Water Temp. Gauge (I/O, I/B):                          | 2"   | 120-240°F   | REQUIRES "D"  | 59706P      |
| 4 Gauge Set                                            |      |             |               | 65481P      |
| 6 Gauge Set                                            |      |             |               | 65485P      |

\* Mariner 30 & 40 HP (2-cylinder) engines require a module (Mercury P/N 17461A2) when using any of these tachometers. Not tested for non-original-equipment (aftermarket) ignition systems. Not for diesels.

\*\* Adapter (P/N 61886P) is required for Yamaha.

*All gauge products are only available in North America!*

# STERLING

Ideal for outboards and stern drives! With stainless steel bezels, brushed aluminum dials and black pointers, Sterling instruments give a bright, gleaming look to any dash. Perimeter lighting provided for night operation.



63477P



63475P

## FEATURES:

- Brushed aluminum dial, black graduations/numerals, black pointer.
- Scratch resistant curved glass lenses, with polished stainless steel, near-flush bezels.
- Perimeter lighting.
- U.S. and metric scales, with ISO symbols, where appropriate.
- Optional add-on square bezels for modular appearance (See Gauge Accessories for details).

## SELECTION GUIDE:

| GAUGE DESCRIPTION                                      | SIZE | DIAL RANGE  | SENDER CODE   | PART NUMBER |
|--------------------------------------------------------|------|-------------|---------------|-------------|
| Fuel Gauge:                                            | 2"   | E-1/2-F     | REQUIRES "F"  | 63477P      |
| Oil Pressure Gauge (Electric):                         | 2"   | 0-80 PSI    | REQUIRES "C"  | 63479P      |
| Speedometer Kits:                                      |      |             |               |             |
| 65 MPH (Pitot type)                                    | 3"   | 10-65 MPH   | INCLUDES "G"  | 63475P      |
| 65 MPH (Pitot type) Head Only                          | 3"   | 10-65 MPH   | INCLUDES "G"  | 63475PH     |
| 80 MPH (Pitot type)                                    | 3"   | 20-80 MPH   | INCLUDES "G"  | 63476P      |
| 80 MPH (Pitot type) Head Only                          | 3"   | 20-80 MPH   | INCLUDES "G"  | 63476PH     |
| Systems Check – Evinrude/Johnson:                      | 2"   | SYSTEM DATA | BY ENG. MFR.  | 63585P      |
| Tachometer (Electric):                                 |      |             |               |             |
| O/B & 4-Stroke Gas Engines*                            | 3"   | 0-7000 RPM  | O/B ALT./COIL | 63473P      |
| Tachometer/Hourmeter (Electric):                       |      |             |               |             |
| O/B & 4-Stroke Gas Engines*                            | 3"   | 0-7000 RPM  | O/B ALT./COIL | 63474P      |
| Trim Gauges (Outboard, I/O):                           |      |             |               |             |
| Evinrude/Johnson Outboard                              | 2"   | UP-DOWN     | BY ENG. MFR.  | 63483P      |
| Honda                                                  | 2"   | UP-DOWN     | BY ENG. MFR.  | 64475P      |
| Mariner/Merc/Cobra/Volvo DP, SX,<br>Yamaha 2001 and on | 2"   | UP-DOWN     | BY ENG. MFR.  | 63482P      |
| Suzuki 4-Stroke, 2002 to date                          | 2"   | UP-DOWN     | BY ENG. MFR.  | 63483P      |
| Voltmeter-12 Volt:                                     | 2"   | 8-18 VDC    | NONE REQ'D    | 63478P      |
| Warning Light Gauge – Suzuki:                          | 2"   | SYSTEM DATA | BY ENG. MFR.  | 65698SSP    |
| Water Pressure Kit (Outboard):**                       |      |             |               |             |
| (Kit includes fittings/20 feet of tubing)              | 2"   | 30 PSI      | INCLUDES "WP" | 63481P      |
| Water Temp. Gauge (I/O, I/B):                          | 2"   | 120-240°F   | REQUIRES "D"  | 63480P      |

\* Mariner 30 & 40 HP (2-cylinder) engines require a module (Mercury P/N 17461A2) when using any of these tachometers. Not tested for non-original-equipment (aftermarket) ignition systems. Not for diesels.

\*\* Adapter (P/N 61886P) is required for Yamaha.

*All gauge products are only available in North America!*



# GOLD STERLING

Gold Sterling instruments feature crisp stainless steel dials with a white staff. These gauges provide a modern look for any dash with bright gold and black graphics. Gold Sterling gauges are versatile enough to match any dash. It also complements a variety of wood, allowing you the design flexibility to create your own distinctive look.



67176F



67106F

## FEATURES:

- Domed glass lens.
- Perimeter lit dial.
- Stainless steel elite bezel.
- Anti-Fog\* coated lens.
- Blue bulb lighting.
- Black & Gold graphics on spun aluminum background dial.
- White pointer.
- Perimeter Blue lighting.
- Matching digital depth gauge available as well.
- Fits most stern drive and outboard applications.
- US and Metric scales where appropriate.

\* Complies with SAE J-1810.

## SELECTION GUIDE:

| GAUGE DESCRIPTION                         | SIZE | DIAL RANGE | SENDER CODE   | PART NUMBER |
|-------------------------------------------|------|------------|---------------|-------------|
| Fuel Gauge:                               | 2"   | E-1/2-F    | REQUIRES "F"  | 667101P     |
| Speedometer Kits:                         |      |            |               |             |
| 35 MPH (Pitot type)                       | 3"   | 5-35 MPH   | INCLUDES "G"  | 67173P      |
| 35 MPH (Pitot type) Head Only             | 3"   | 5-35 MPH   | INCLUDES "G"  | 67173PH     |
| 60 MPH (Pitot type)                       | 3"   | 10-60 MPH  | INCLUDES "G"  | 67106P      |
| 60 MPH (Pitot type) Head Only             | 3"   | 10-60 MPH  | INCLUDES "G"  | 67106PH     |
| Oil Pressure Gauge (Electric):            | 2"   | 0-80 PSI   | REQUIRES "C"  | 67104P      |
| Tachometer (Electric):                    |      |            |               |             |
| O/B & 4-Stroke Gas Engines*               | 3"   | 0-7000 RPM | O/B ALT./COIL | 67107P      |
| Tachometer/Hourmeter (Electric):          |      |            |               |             |
| O/B & 4-Stroke Gas Engines*               | 3"   | 0-7000 RPM | O/B ALT./COIL | 67174P      |
| Trim Gauges (Outboard, I/O):              |      |            |               |             |
| Evinrude/Johnson Outboard                 | 2"   | UP-DOWN    | BY ENG. MFR.  | 67175P      |
| Honda                                     | 2"   | UP-DOWN    | BY ENG. MFR.  | 67176P      |
| Yamaha 2001 and on                        | 2"   | UP-DOWN    | BY ENG. MFR.  | 67103P      |
| Suzuki 4-Stroke, 2002 to date             | 2"   | UP-DOWN    | BY ENG. MFR.  | 67175P      |
| Voltmeter-12 Volt:                        | 2"   | 8-18 VDC   | NONE REQ'D    | 67102P      |
| Water Temp. Gauge (I/O, I/B):             | 2"   | 120-240°F  | REQUIRES "D"  | 67105P      |
| Water Pressure Kit (Outboard):**          |      |            |               |             |
| (Kit includes fittings/20 feet of tubing) | 2"   | 40 PSI     | INCLUDES "WP" | 67873P      |

*All gauge products are only available in North America!*

# BLACK STERLING

With its rich luster and polish, Black Sterling instruments convey a look of utmost sophistication and add elegance to any dash. These instruments have fire-orange pointer tips and stainless graphics for a contemporary, ultra stylish look. Black Sterling instruments have clean, crisp black dials which highlight the stainless accents.



67022P



67285PH

## FEATURES:

- Scratch-resistant domed glass lens.
- Perimeter lit dial.
- Elite stainless steel bezel.
- Black pointer with fire orange tip.
- White graphics and black background on spun aluminum dial.
- Fits most stern drive and outboard applications.
- US and Metric scales where appropriate.

## SELECTION GUIDE:

| GAUGE DESCRIPTION                                        | SIZE | DIAL RANGE | SENDER CODE     | PART NUMBER |
|----------------------------------------------------------|------|------------|-----------------|-------------|
| Fuel Gauge                                               | 2"   | E-1/2-F    | Code F          | 67021P      |
| Voltmeter                                                | 2"   | 8-18 VDC   | N/R             | 67019P      |
| Water Temperature (Electric)                             | 2"   | 100-240°F  | Code D          | 67020P      |
| Oil Pressure (Electric)                                  | 2"   | 0-80 PSI   | Code C          | 67022P      |
| Speedometer Kit                                          | 3"   | 0-35 MPH   | Includes G      | 67283P      |
| Speedometer (Gauge Only)                                 | 3"   | 0-35 MPH   | Code G          | 67283PH     |
| Speedometer Kit                                          | 3"   | 0-70 MPH   | Includes G      | 67285P      |
| Speedometer (Gauge Only)                                 | 3"   | 0-70 MPH   | Code G          | 67285PH     |
| Tachometer: O/B & 4 Cycle Gas                            | 3"   | 0-7000 RPM | O/B Alt or Coil | 67363P      |
| Tach/LCD Hr, O/B & 4 Cycle Gas                           | 3"   | 0-7000 RPM | O/B Alt or Coil | 67364P      |
| Trim: Mariner/Mercury Yamaha,<br>2001 to date            | 2"   | UP-DOWN    | Eng Mfr supply  | 67023P      |
| Trim: Evinrude/ Johnson Suzuki 4-Stroke,<br>2002 to date | 2"   | UP-DOWN    | Eng Mfr supply  | 67365P      |
| O/B Water Pressure Kit                                   | 2"   | 0-40 PSI   | Includes WP     | 67382PH     |

*All gauge products are only available in North America!*

# AMEGA

Hottest selling black dial line! Amega® Domed has clean-looking black dials with white and red graphics plus through-dial and perimeter lighting for great readability. Amega has been very popular, available in several styles since its debut in 1986.



57904P



57900P

## FEATURES:

- Black dial, red graduations, white numerals, vivid white pointer staff.
- Scratch resistant curved glass lenses, with black, near-flush bezels.
- U.S. and metric scales, with ISO symbols, where appropriate.
- Perimeter and thru-dial lighting.
- A comprehensive array of outboard water pressure instrument kits.
- Optional add-on square bezels for modular appearance (See Gauge Accessories for details).

## SELECTION GUIDE:

| GAUGE DESCRIPTION                                      | SIZE | DIAL RANGE  | SENDER CODE   | PART NUMBER |
|--------------------------------------------------------|------|-------------|---------------|-------------|
| Fuel Gauge:                                            | 2"   | E-1/2-F     | REQUIRES "F"  | 57902P      |
| Hourmeter:                                             | 2"   | 10,000 Hrs. | NONE REQ'D    | 84760P      |
| Oil Pressure Gauges (Electric):                        |      |             |               |             |
| Oil Pressure 80 PSI                                    | 2"   | 0-80 PSI    | REQUIRES "C"  | 57903P      |
| Oil Pressure 100 PSI                                   | 2"   | 0-100 PSI   | REQUIRES "C"  | 57929P      |
| Speedometer Kits:                                      |      |             |               |             |
| Low Speed Range (Pitot type)                           | 3"   | 5-35 MPH    | INCLUDES "G"  | 58342P      |
| Low Speed Range (Pitot type) Head Only                 | 3"   | 5-35 MPH    | INCLUDES "G"  | 58342PH     |
| 50 MPH (Pitot type)                                    | 3"   | 10-50 MPH   | INCLUDES "G"  | 57898P      |
| 50 MPH (Pitot type) Head Only                          | 3"   | 10-50 MPH   | INCLUDES "G"  | 57898PH     |
| 65 MPH (Pitot type)                                    | 3"   | 10-65 MPH   | INCLUDES "G"  | 57900P      |
| 65 MPH (Pitot type) Head Only                          | 3"   | 10-65 MPH   | INCLUDES "G"  | 57900PH     |
| 80 MPH (Pitot type)                                    | 3"   | 20-80 MPH   | INCLUDES "G"  | 57899P      |
| 80 MPH (Pitot type) Head Only                          | 3"   | 20-80 MPH   | INCLUDES "G"  | 57899PH     |
| Systems Check – Evinrude/Johnson:                      | 2"   | SYSTEM DATA | BY ENG. MFR.  | 65205P      |
| Tachometer (Electric):                                 |      |             |               |             |
| O/B & 4-Stroke Gas Engines*                            | 3"   | 0-7000 RPM  | O/B ALT./COIL | 58255P      |
| Systems Check – Evinrude/Johnson                       | 3"   | 0-7000 RPM  | O/B ALT./COIL | 58935P      |
| Tachometer/Hourmeter (Electric):                       |      |             |               |             |
| O/B & 4-Stroke Gas Engines*                            | 3"   | 0-6000 RPM  | O/B ALT./COIL | 57897P      |
| Trim Gauges (Outboard, I/O):                           |      |             |               |             |
| Evinrude/Johnson Outboard                              | 2"   | UP-DOWN     | BY ENG. MFR.  | 58431P      |
| Mariner/Merc/Cobra/Volvo DP, SX,<br>Yamaha 2001 and on | 2"   | UP-DOWN     | BY ENG. MFR.  | 57905P      |
| Yamaha                                                 | 2"   |             |               | 61748P      |
| Suzuki 4-Stroke, 2002 to date                          | 2"   | UP-DOWN     | BY ENG. MFR.  | 58431P      |
| Voltmeter-12 Volt:                                     | 2"   | 8-18 VDC    | NONE REQ'D    | 57901P      |
| Warning Light Gauge – Suzuki:                          | 2"   | SYSTEM DATA | BY ENG. MFR.  | 65668BMDP   |
| Water Pressure Kits (Outboard):**                      |      |             |               |             |
| (Each kit includes fittings<br>and 20 feet of tubing)  | 2"   | 30 PSI      | INCLUDES "WP" | 61238P      |
|                                                        | 2"   | 45 PSI      | INCLUDES "WP" | 61012P      |
| Water Temp. Kit (Outboard):**                          |      |             |               |             |
| (For all electric-start outboards)                     | 2"   | 100-220°F   | INCLUDES "J"  | 58862P      |
| Water Temp. Gauge (I/O, I/B):                          | 2"   | 120-240°F   | REQUIRES "D"  | 57904P      |

\*Mariner 30 & 40 HP (2-cylinder) engines require a module (Mercury P/N 17461A2) when using any of these tachometers. Not tested for non-original-equipment (aftermarket) ignition systems. Not for diesels.

\*\* Adapter (P/N 61886P) is required for Yamaha.

*All gauge products are only available in North America!*

# ARCTIC

Stylish white bezel design, black on white graphics, accurate and reliable, these tough instruments look good on all types of boats. Domed glass sheds water and resists scratching.



69383P



68371P

## FEATURES:

- Instruments available for most outboards, stern drives and gasoline-powered inboards.
- Scratch-resistant domed glass lenses.
- Enhanced illumination: through-dial and perimeter lighting for excellent readability at night.
- Low-range speedometers.
- U.S. and metric scales, with ISO symbols, where appropriate.
- Optional add-on square bezels for modular appearance (See Gauge Accessories for details).

## SELECTION GUIDE:

| GAUGE DESCRIPTION                                                                      | SIZE        | DIAL RANGE | SENDER CODE     | PART NUMBER |
|----------------------------------------------------------------------------------------|-------------|------------|-----------------|-------------|
| Ammeter                                                                                | 2"          | 60-0-60    | F               | 68364P      |
| Fuel Gauge                                                                             | 2"          | (E-F)      | N/R             | 68365P      |
| Hourmeter                                                                              | 2"          | 10,000 hrs |                 | 68366P      |
| Eng Oil Pressure gauge 0-80 PSI                                                        | 2"          | 0-80 PSI   | C               | 68367P      |
| Eng Oil Pressure gauge 0-100 PSI                                                       | 2"          | 0-100 PSI  | C               | 68368P      |
| Water Pressure Kits (Outboard):<br>(Each kit includes fittings and 20 feet of tubing). | 2"          | 0-40 PSI   | WP(included)    | 68369P      |
| Speedo Kit 0-35 mph (inc Pitot and Hose)                                               | 3"          | 5-35 MPH   | G (included)    | 68370P      |
| Speedo Kit 0-65 mph (inc Pitot and Hose)                                               | 3"          | 10-65 MPH  | G (included)    | 68371P      |
| Speedo Kit 0-80 mph (inc Pitot and Hose)                                               | 3"          | 20-80 MPH  | G (included)    | 68372P      |
| Tachometer 0-4000 RPM Diesel Alt                                                       | 3"          | 0-4000 RPM | ALTERNATOR      | 68373P      |
| Tachometer 0-7000 RPM                                                                  | 3"          | 0-7000 RPM | O/B Alt or Coil | 68374P      |
| Tach/Hourmeter 0-7000 RPM Petrol/Gas                                                   | 3"          | 0-7000 RPM | O/B Alt or Coil | 68375P      |
| I/O, I/B Water Temp Gauge                                                              | 2"          | 120-240°F  | D               | 68376P      |
| Outboard Water Temp Kit (Cold-Hot) - includes "J"                                      | 2"          | 100-220°F  | J (included)    | 68377P      |
| Trim, Evinrude/Johnson O/B                                                             | 2"          | UP-DOWN    | Eng Mfr supply  | 68378P      |
| Trim, Honda                                                                            | 2"          | UP-DOWN    | Eng Mfr supply  | 68379P      |
| Trim, Mariner/Merc, Yamaha 2001                                                        | 2"          | UP-DOWN    | Eng Mfr supply  | 68380P      |
| Trim, Yamaha Outboards, pre 2001                                                       | 2"          | UP-DOWN    | Eng Mfr supply  | 68381P      |
| 12v Voltmeter, 8-18 Volts                                                              | 2"          | 8-18 VDC   | N/R             | 68383P      |
| 12 Battery Condition Indicator                                                         | 2"          |            | N/R             | 68384P      |
| System Check - Evinrude/Johnson                                                        |             |            | Eng Mfr supply  | 68385P      |
| Instrument Set "OUTBOARD"                                                              | 4 Gauge set |            |                 | 68387P      |
| Instrument Set "INBOARD/STERNDRIVE"                                                    | 6 Gauge set |            |                 | 68388P      |

*All gauge products are only available in North America!*

# ECLIPSE

Smart white and blue graphics on a black dial background, these very low profile bezels follow the curve of the lense to eliminate water trapping. Design with domed glass sheds water and resists scratching.



68390P



68397P

## FEATURES:

- Instruments available for most outboards, stern drives and gasoline-powered inboards.
- Scratch-resistant domed glass lenses.
- Perimeter lighting for excellent readability at night.
- U.S. and metric scales, with ISO symbols, where appropriate.
- Optional add-on square bezels for modular appearance (See Gauge Accessories for details).

## SELECTION GUIDE:

| GAUGE DESCRIPTION                                                                      | SIZE        | DIAL RANGE | SENDER CODE     | PART NUMBER |
|----------------------------------------------------------------------------------------|-------------|------------|-----------------|-------------|
| Ammeter                                                                                | 2"          | 60-0-60    | F               | 68389P      |
| Fuel Gauge                                                                             | 2"          | (E-F)      | N/R             | 68390P      |
| Hourmeter                                                                              | 2"          | 10,000 hrs |                 | 68391P      |
| Eng Oil Pressure gauge 0-80 PSI                                                        | 2"          | 0-80 PSI   | C               | 68392P      |
| Eng Oil Pressure gauge 0-100 PSI                                                       | 2"          | 0-100 PSI  | C               | 68393P      |
| Water Pressure Kits (Outboard):<br>(Each kit includes fittings and 20 feet of tubing). | 2"          | 0-40 PSI   | WP (included)   | 68394P      |
| Speedo Kit 0-35 mph (inc Pitot and Hose)                                               | 3"          | 5-35 MPH   | G (included)    | 68395P      |
| Speedo Kit 0-65 mph (inc Pitot and Hose)                                               | 3"          | 10-65 MPH  | G (included)    | 68396P      |
| Speedo Kit 0-80 mph (inc Pitot and Hose)                                               | 3"          | 20-80 MPH  | G (included)    | 68397P      |
| Tachometer 0-4000 RPM Diesel Alt                                                       | 3"          | 0-4000 RPM | ALTERNATOR      | 68398P      |
| Tachometer 0-7000 RPM                                                                  | 3"          | 0-7000 RPM | O/B Alt or Coil | 68399P      |
| Tach/Hourmeter 0-7000 RPM Petrol/Gas                                                   | 3"          | 0-7000 RPM | O/B Alt or Coil | 68400P      |
| I/O, I/B Water Temp Gauge                                                              | 2"          | 120-240°F  | D               | 68401P      |
| Outboard Water Temp Kit (Cold-Hot) - includes "J"                                      | 2"          | 100-220°F  | J (included)    | 68402P      |
| Trim, Evinrude/Johnson O/B                                                             | 2"          | UP-DOWN    | Eng Mfr supply  | 68403P      |
| Trim, Honda                                                                            | 2"          | UP-DOWN    | Eng Mfr supply  | 68404P      |
| Trim, Mariner/Merc, Yamaha 2001                                                        | 2"          | UP-DOWN    | Eng Mfr supply  | 68405P      |
| Trim, Yamaha Outboards, pre 2001                                                       | 2"          | UP-DOWN    | Eng Mfr supply  | 68406P      |
| 12v Voltmeter, 8-18 Volts                                                              | 2"          | 8-18 VDC   | N/R             | 68408P      |
| 12 Battery Condition Indicator                                                         | 2"          |            | N/R             | 68409P      |
| System Check - Evinrude/Johnson                                                        | 2"          |            | Eng Mfr supply  | 68410P      |
| System Check - Suzuki                                                                  | 2"          |            | Eng Mfr supply  | 68411P      |
| Instrument Set "OUTBOARD"                                                              | 4 Gauge set |            |                 | 68412P      |
| Instrument Set "INBOARD/STERNDRIVE"                                                    | 6 Gauge set |            |                 | 68413P      |

*All gauge products are only available in North America!*

# HEAVY DUTY

A classic line for inboards including diesels, Heavy Duty includes mechanical water temperature and oil pressure gauges, ammeters, engine sync gauges\* and a range of diesel tachometers, including a programmable tach/hourmeter.

\*Module required, not included with gauge.



80150P



80514P

## FEATURES:

- Classic white graphics and pointer on deep black faces.
- Low-profile polished stainless steel bezels.
- Perimeter lighting and scratch resistant glass lenses.
- Tachometers for diesels available.
- Several temperature and mechanical oil pressure gauges available.
- Programmable tach/hourmeter offered.
- Ideal replacement for Stewart-Warner® "Deluxe" instruments.
- Optional add-on square bezels for modular appearance (See Gauge Accessories for details).

## SELECTION GUIDE:

| GAUGE DESCRIPTION                                            | SIZE | DIAL RANGE     | SENDER CODE      | PART NUMBER |
|--------------------------------------------------------------|------|----------------|------------------|-------------|
| <b>Ammeters:</b>                                             |      |                |                  |             |
| Direct Reading 40 Amp Range                                  | 2"   | 40-0-40A       | NONE REQ'D.      | 80712P      |
| Direct Reading 60 Amp Range                                  | 2"   | 60-0-60A       | NONE REQ'D.      | 80710P      |
| Engine Synchronizer Gauge:                                   | 2"   | Port-Starboard | REQUIRES "L"     | 80730P      |
| Fuel Gauge:                                                  | 2"   | E-1/2-F        | REQUIRES "F"     | 80150P      |
| Fuel Gauge, Nylon, 24 Volt                                   | 2"   |                |                  | 67346P      |
| Hourmeter:                                                   | 2"   | 10,000 Hrs.    | NONE REQ'D.      | 82760P      |
| <b>Oil Pressure Gauges (Electric):</b>                       |      |                |                  |             |
| Oil Pressure 80 PSI                                          | 2"   | 0-80 PSI       | REQUIRES "C"     | 80180P      |
| Oil Pressure 80 PSI, Nylon, 24 Volt                          | 2"   | 0-80 PSI       | REQUIRES "C"     | 67347P      |
| Oil Pressure 100 PSI                                         | 2"   | 0-100 PSI      | REQUIRES "C"     | 80181P      |
| Oil Pressure 100 PSI, Nylon, 24 Volt                         | 2"   | 0-100 PSI      | REQUIRES "C"     | 67353P      |
| <b>Oil Pressure Gauge (Mechanical, 1/8" NPT connection):</b> |      |                |                  |             |
| Oil Pressure 100 PSI****                                     | 2"   | 0-100 PSI      | ****             | 82380P      |
| <b>Oil Temperature Gauge (Electric):</b>                     |      |                |                  |             |
| Oil Temperature 320°F                                        | 2"   | 140-320° F     | REQUIRES "E"     | 80596P      |
| <b>Speedometer Kit:</b>                                      |      |                |                  |             |
| 60 MPH (Pitot Type)                                          | 3"   | 10-60 MPH      | INCLUDES "G"     | 80514P      |
| 60 MPH (Pitot Type) Head Only                                | 3"   | 10-60 MPH      | INCLUDES "G"     | 80514PH     |
| <b>Tachometers (Electric):</b>                               |      |                |                  |             |
| Diesel Alternator**                                          | 3"   | 0-3500 RPM     | SEE "T"          | 82302P      |
| Diesel Magnetic Pickup, 90-180 Teeth                         | 3"   | 0-3500 RPM     | REQUIRES "B"     | 82303P      |
| Diesel Signaflex ***                                         | 3"   | 0-3500 RPM     | REQUIRES "A"     | 82301P      |
| O/B & 4-Stroke Gas Engines*                                  | 3"   | 0-6000 RPM     | O/B ALT./COIL    | 82288P      |
| <b>Tachometer/Hourmeter (Electric, Programmable):</b>        |      |                |                  |             |
| 3.5K, Nylon, High Frequency                                  | 3"   |                | REQUIRES         | 82431P      |
| Diesel, Low Frequency, 133-1248 HZ                           | 3"   | 0-3500 RPM     | "A", "B", OR "T" | 82430P      |
| <b>Water Temp. Gauge (Electric):</b>                         |      |                |                  |             |
| Water Temp 240°F                                             | 2"   | 120-240°F      |                  | 80590P      |
| Water Temp 240°F, Nylon                                      | 2"   | 120-240°F      | REQUIRES "D"     | 67349P      |
| Water Temp 280°F, Nylon                                      | 2"   | 100-280        |                  | 80593P      |
| <b>Water Temp. Gauges (Mechanical):</b>                      |      |                |                  |             |
| Water Temp 265°F, with 72" Tube                              | 2"   | 100-265° F     | INCLUDES "Q"     | 82418P      |
| <b>Voltmeters-12 &amp; 24 Volt:</b>                          |      |                |                  |             |
| 12 Volt System                                               | 2"   | 10-16 VDC      | NONE REQ'D.      | 80134P      |
| 24 Volt System                                               | 2"   | 20-32 VDC      | NONE REQ'D.      | 80131P      |
| Vacuum Gauge, Mechanical, Nylon                              | 2"   | 0-30 Hg.       |                  | 82410P      |

\* Mariner 30 & 40 HP (2-cylinder) engines require a module (Mercury P/N 17461A2) when using any of these tachometers. Not tested for non-original-equipment (aftermarket) ignition systems. Not for diesels.

\*\* May require alternator tap

\*\*\* Signaflex senders and drive tips are for domestic diesel engines only (not for Lehman, Renault, Volvo, Yanmar, etc.)

\*\*\*\* Use suitable hose or tubing. NOT available from Teleflex.

*All gauge products are only available in North America!*

# GAUGE ACCESSORIES



67281P



56973P

## SELECTION GUIDE:

| DESCRIPTION                           | PART NUMBER | DESCRIPTION                                | PART NUMBER |
|---------------------------------------|-------------|--------------------------------------------|-------------|
| Accessory, Gauge Blank                | 10860       | Accessory, Pitot tubing, 30-80 mph, 100'   | 56353P      |
| Accessory, Gauge Tester               | 55920       | Sender, Fuel, Kit, w/Gauge, 4-24" Tank     | 56948P      |
| Accessory, Fuel Sender Gasket         | 64082       | Hourmeter, Round                           | 56966P      |
| Accessory, Eng. Synch Harness         | 1471175     | Hourmeter, Rect                            | 56967P      |
| Eng. Synch Module, Diesel Alternator  | 1504877     | Pitot, 30-80 mph Speedometers              | 56973P      |
| Eng. Synch Module,                    |             | Accessory, Bulb & Socket Kit               | 57376D      |
| Diesel Mag. P.U., 159 Teeth           | 1507574     | Accessory, Drive Tip - .203 Diameter       | 5933676P    |
| Mag. Prox. Sender                     | 1507678P    | Accessory, Pack O'Pitots                   | 59677P      |
| Eng Synch Module, 4-Cycle Gas         | 1508370P    | Accessory, Yamaha Adapter for WP/Temp      | 61886P      |
| Accessory, Bulb & Socket Kit          | 1827871P    | Accessory, Dropping Resistor,              |             |
| Accessory, Bulb & Socket Kit, 24 volt | 1838575P    | 24-12V, 2" Gauges                          | 6219371P    |
| Accessory, Dropping Resistor,         |             | Dual Hourmeter - LCD                       | 67281P      |
| 24-12 v, Trims                        | 50446-002P  | Accessory, Pitot Hose Kit,                 |             |
| Sender, Temp, Sgl Sta, 140-320F,      |             | 25' + Mnting Hdw.                          | 67437P      |
| 1/2" NPT                              | 52320S002   | Sender, Fuel, 4-24" tankdepth              | 90424P      |
| Sender, Temp, Sgl Sta, 100-280F,      |             | Accessory, Lamp, Wedge Base, 24 volt       | 40102E007   |
| 1/2" NPT                              | 52320S005   | Accessory, Fuse Holder, Panel Mount        | IA17537     |
| Sender, Temp, Sgl Sta, 100-240F,      |             | Bracket, O/B Temp Sender                   | IA55009     |
| 3/8" NPT                              | 52320S009   | Accessory, Drive Tip - .187 Diameter       | IA59335     |
| Sender, Temp, Sgl Sta, 100-280F,      |             | Accessory, Light Kit, Wedge Base, 12VDC    | IA62995     |
| 3/8" NPT                              | 52320S026   | Accessory, Aircraft Bezel, 2"              | IA65476     |
| Sender, Temp, Sgl Sta, 100-280F,      |             | Accessory, Aircraft Bezel, 3"              | IA65477     |
| 1/8" NPT                              | 52320S028   | Sender, Signaflex Tach Generator           | IA96042     |
| Accessory, Drive Tang - .104 Square   | 52776P      | Accessory, Tach Harness, Evinrude, Johnson | IH14767     |
| Accessory, Ski/Elect. Speedo          |             | Accessory, Mariner/Merc O/B Tach Harness   | IH15105     |
| Sender Complete                       | 55907P      | Accessory, Drive Tip - .152 Diameter       | IH59129     |
| Shunt, 60-0-60                        | 56246P      |                                            |             |

*All gauge products are only available in North America!*